

Featured Program - Learn more about protecting your nursery plants with the nursery crop insurance program.



Featured Partner - Meet Julie Nolen who works for the Alaska Small Business Development Center as the Southcentral Regional Director.



Trivia Time - Name that Crop

- Over 1 billion pounds produced annually in the U.S.
- This crop was once recommended for removing freckles and curing snake bites.
- Scientifically, this crop is a fruit, but when cooked it's often referred to as a vegetable.

**Trivia answer can be found on page 2*

Farm Service Agency Offices

Southern Country Farm Service Agency

800 W Evergreen Ave, Ste 100
Palmer, Alaska 99645
Phone: (907) 761-7754

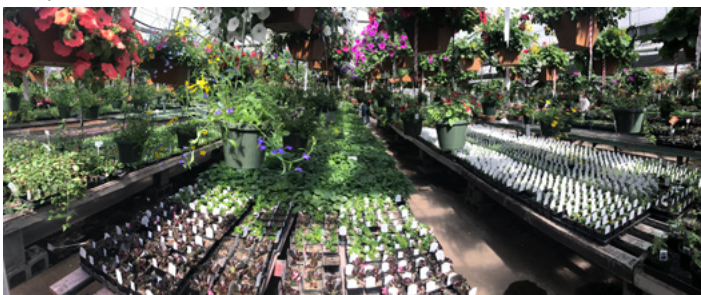
Northern Country Farm Service Agency

Jarvis Bldg. 1420 1/2 Alaska Hwy
Delta Junction, AK
Phone: (907) 895-4241

Featured Program

Nursery Crop Insurance

The nursery crop insurance program protects your plant inventory value against adverse weather, fire, wildlife, and failure of irrigation water supply. This program uses your operation's Plant Inventory Value Report (PIVR) to determine your insurance guarantee. PIVR is declared by using either your wholesale catalog or your price list.



Spring is a busy time for our nursery crop growers as they prepare to sell Alaska Grown plants and flowers at local greenhouses.

Interested in learning more about Nursery Crop Insurance? Visit <https://www.rma.usda.gov/> or contact an agent!

Upcoming Sales Closing Dates

The following crop insurance programs have an approaching sales closing date of

May 1, 2018:

- Nursery



Featured Partner

Meet Julie Nolen

Mrs. Nolen has been with the Alaska Small Business Development Center (SBDC) since 2010. She currently serves as the Southcentral Regional Director, managing the Mat-Su and Wasilla regional offices. In addition to her responsibilities as Regional Director, she is also on the leadership team for the state SBDC office. Her role for our project consists of assisting AgriLogic as the instructor of the free QuickBooks workshops and webinars offered through this project.



Contact Information:

Julie Nolen, Alaska Small Business
Development Center
Email: julie.nolen@asbdc.org
Ph: 907-373-7232

Fun Ag Fact

THE OLD
FARMER'S ALMANAC
FOUNDED IN 1792

WARMING YOUR SOIL FOR SPRING
PLANTING

The best way to warm garden soil!

Crop Insurance Agents Serving Alaska
Stanley and Tonya Decker
Mid Columbia Insurance, Inc.
903 W 6th St.
The Dalles, Oregon 97058
Phone: (541) 296-1287

Contact AgriLogic:
Email: alaska@agrilogic.com
Phone: (913) 333-4354
Facebook:
[@AgriLogicConsulting](https://www.facebook.com/AgriLogicConsulting)

Front Page Trivia
Answer:
Pumpkin



Alaska Events

Our next two project trips are scheduled to be held during this summer and we plan to visit multiple areas around Delta Junction and Fairbanks as well as the Kenai Peninsula.

Want to schedule a meeting with us in person? Contact one of our partners or give us a call at (913) 333-4354. We'd love to schedule a time to visit with you and be sure to keep an eye out for us at future events!

Free QuickBooks Workshops

We have partnered with the Alaska Small Business Development Center to provide FREE QuickBooks Workshops to Alaska agricultural producers. For more information and/or to register for one of the following opportunities, please visit aksbdc.ecenterdirect.com/events

Date	Workshop	Location
March 28	Getting started with QuickBooks Online (7 hrs)	Fairbanks
April 10	Introduction to QuickBooks (2 hrs)	Webinar
April 26	Getting started with QuickBooks Online (7 hrs)	Wasilla

Our Partners



Crop Insurance Info

Crop Insurance Definition: Subsidy

In crop insurance terms, your subsidy is the percent (%) of your total premium cost which is paid by the government. This means you as a producer will not pay the full premium amount, but rather only a percentage of it. This percentage is determined once you have chosen your coverage level, and will decrease as your coverage level increases.

About the Project

Under the USDA RMA Partnership Agreement, AgriLogic Consulting, LLC (AgriLogic) has partnered with the Alaska Division of Agriculture, Alaska Farm Bureau, Alaska Food Policy Council, Alaska Small Business Development Center, and the Fairbanks Economic Development Corporation to deliver crop insurance education and related risk management strategies to Alaska farmers between Sept. 30, 2017 and Sept. 29, 2018. AgriLogic will provide training through workshops, on-farm appointments, guest speaker spots at conferences and association meetings, trade show booths, and visits to farmer's markets. Workshops focus on illustrating the value of crop insurance programs available in Alaska. Eligibility requirements, sales closing dates, and agent contact information will be highlighted. FREE individual producer quotes are available upon request! Learn more about our project, upcoming events and crop insurance in Alaska by [clicking here](#).